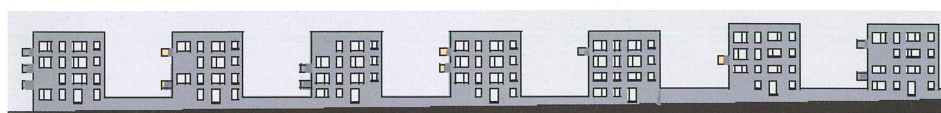


GERMANY

Urban Redevelopment, Leinefelde, Südstadt



Caused by the decrease of population and a high rate of unemployment many of the large housing estates built from about 1960 to 1990 have strongly to be redeveloped. In addition to the demolition of 1200 surplus dwellings the town of Leinefelde followed a successful way of reusing the former pre-fab slab structure to new forms of modern urban housing. The use of substantial modernising investments can only be justified, if it gives birth to buildings who manage to convince the residents by their high functionality and their up-to-date design.

This project cut a previous 200 m block in segments to 8 town villas. Four storeys, large balconies, ground floor dwellings with private gardens and green terraces between the houses give now an atmosphere of more intimacy and individuality. These elements and the modernised dwellings are popular signs of the new quality of life in Leinefelde. The result shows partly a lower urban density, but in balance to a more intensively used green space.

Project: **Stefan Forster** Architekten Frankfurt/Main.
Photos: **Jean-Luc Valentin**