

Morphology+ Layering

Access:

Entrance halls on street side; vertical point access, three units per floor; interior stairwell; stairwells lit by windows.

Interior space:

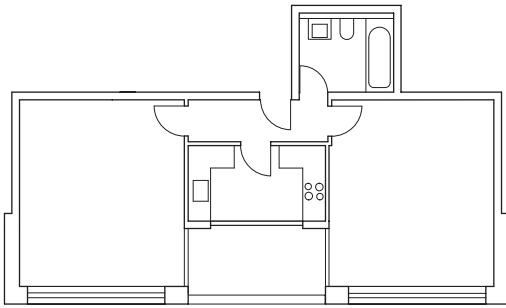
The classic full-width apartments have living/dining spaces that face two sides via the kitchens and loggias. All of the bathrooms and toilets are located in the middle of the building, with no natural lighting or ventilation. The loggias of the smaller units, which fill out each floor, can be accessed from both living rooms as an extension to the kitchen.

Exterior space:

Loggias adjacent to the living room and kitchen, with special layout in the corner units. The apartments on the second floor also have access to a private garden area on the courtyard side.

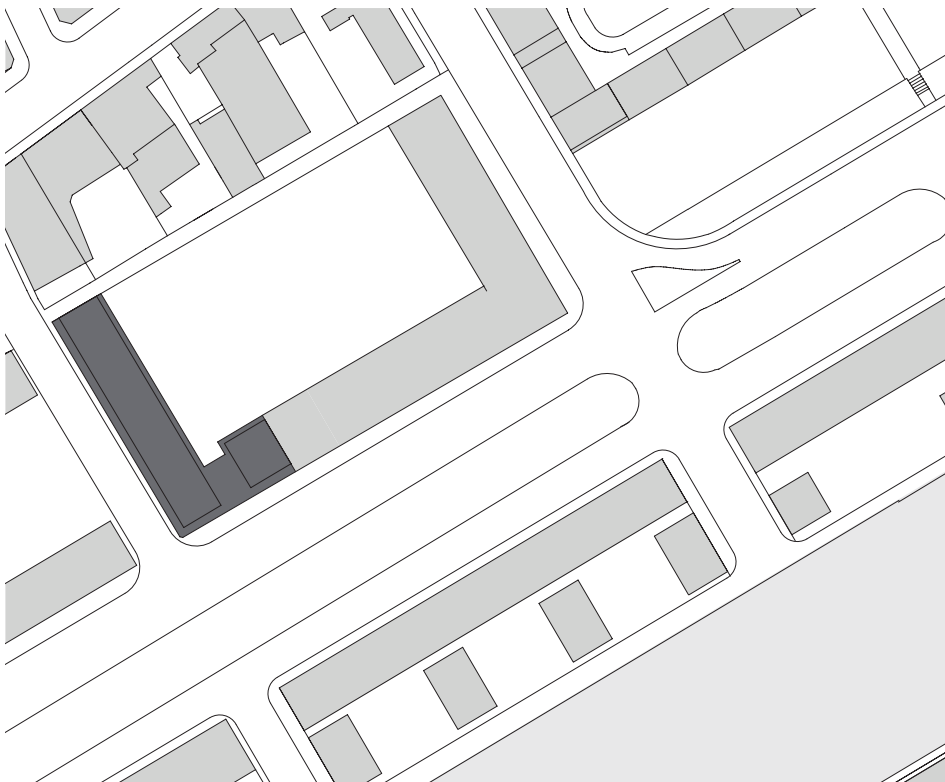
Morphology:

The L-shaped building has a classic urban base as a result of the variety of public offerings on the ground floor. In contrast to the rural look of the courtyard, thanks to the vegetation on the roof and the perforated facade with bright plaster and a serene rhythm, the street sides seem dark and stony. The delicately profiled facade of dark clinker has continuous bands of balustrades. An alternation of window openings and deeper loggias lends the facade a powerful structure and concision.



Typical apartment 1:200

Plan of site, 1:2,000



Building volume:

Perimeter block construction on corner; largely northwest-southeast orientation; 7 floors above ground and 2 below with parking garage; ground floor with a base that fills the lot as a shopping area; depth: ca. 15 m.

Site:

Zanderstraße/Speicherstraße, Frankfurt-Westhafen, Germany

Client:

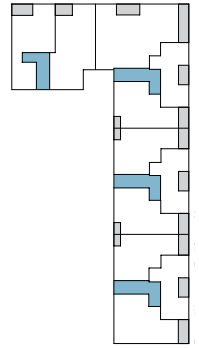
Grundstücksgesellschaft Westgarten, Baufeld 16 GbR, Project partner: Karl Richter
Completed: 2005

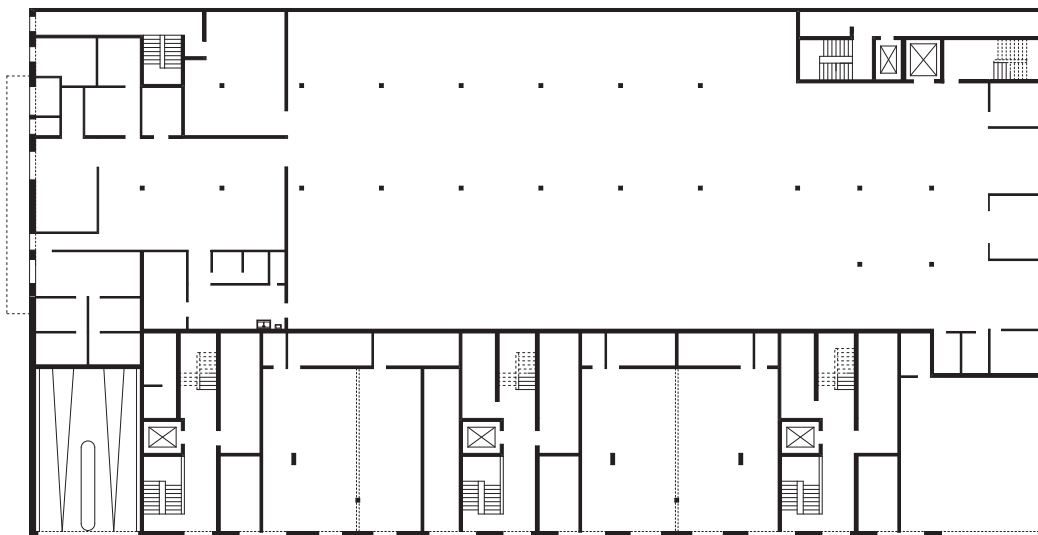
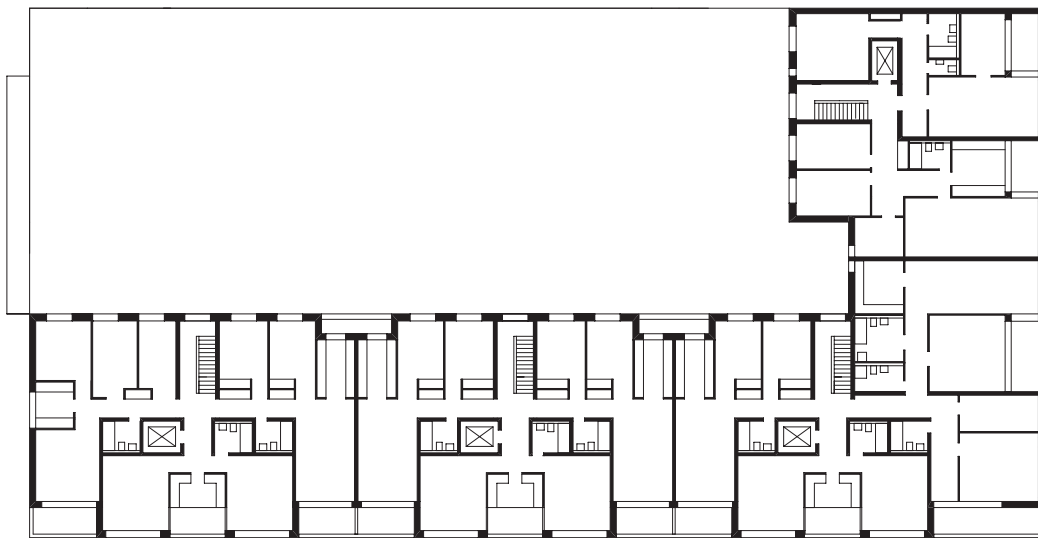
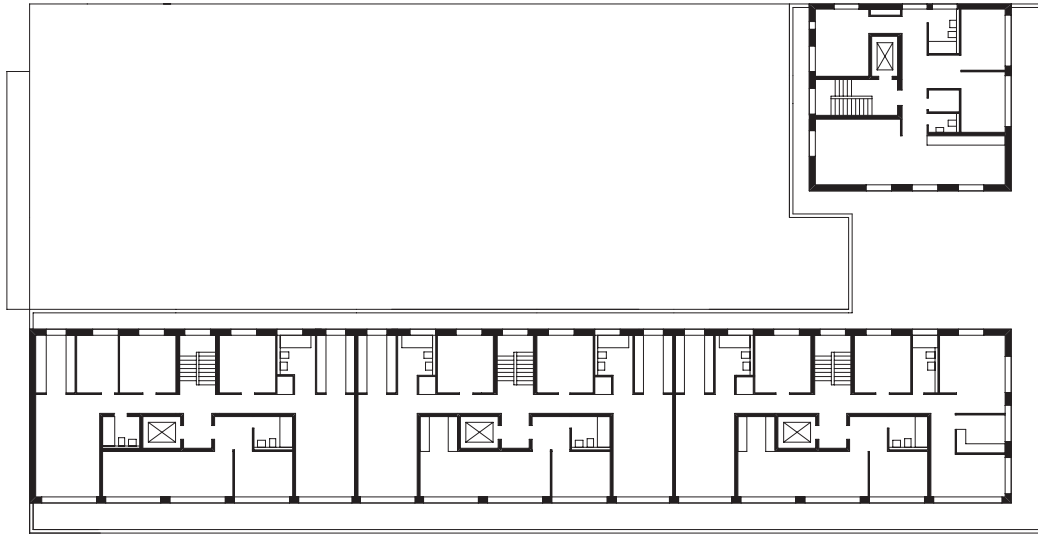
Apartments:

46 units
Key: 7 units with 4 rooms, 88–139 sq m;
13 units with 3 rooms, 81–95 sq m;
26 units with 2 rooms, 57–97 sq m

Additional features:

Stores on ground floor





Top floor
 Standard floor
 Ground floor
 1:500

